

2018 HUNGER in | Cass & Clay North Dakota | Counties

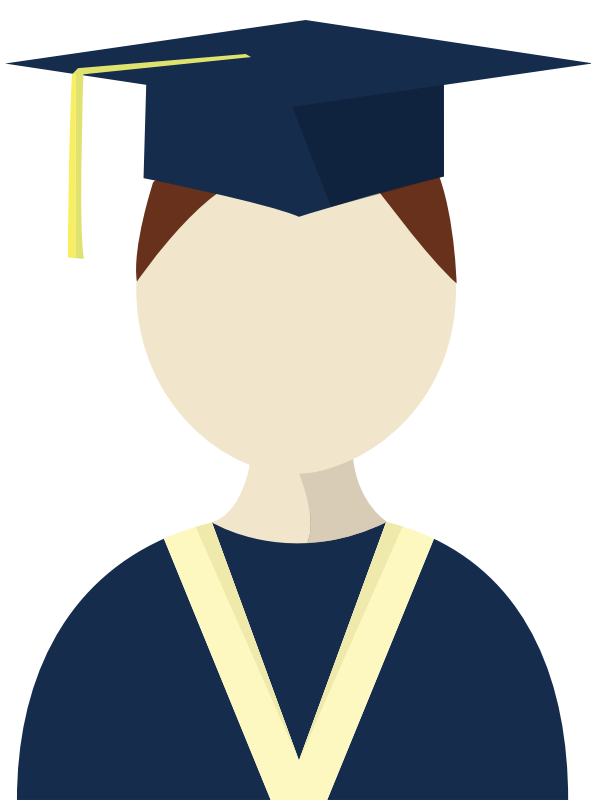
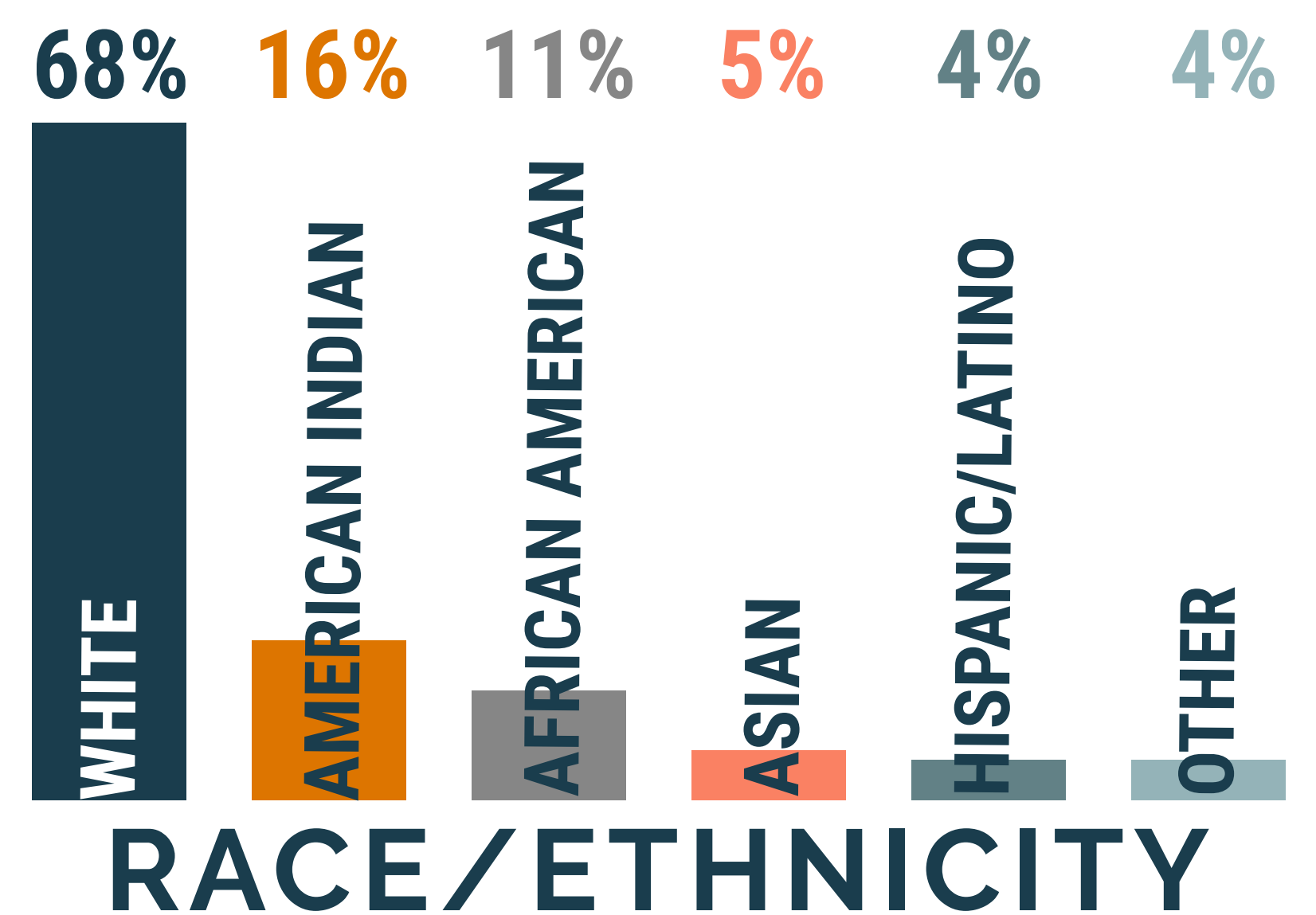
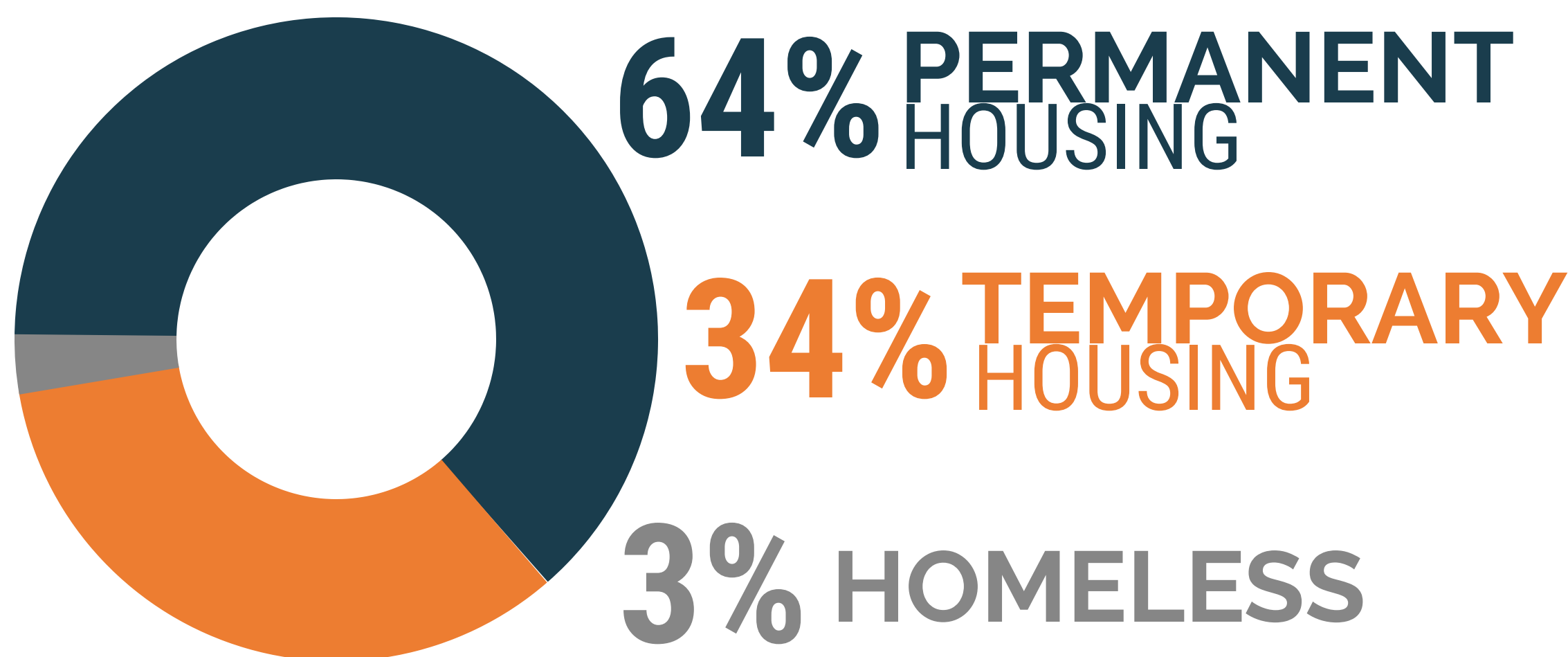
A total of 113 client interviews were conducted at 10 sites throughout Cass County, ND and Clay County, MN.

DEMOGRAPHICS

37% 
CHILDREN

7% 
SENIORS

14% 
VETERANS



85% COMPLETED HIGH SCHOOL

42% HAVE 2+ YEARS OF POST SECONDARY EDUCATION

9% COMPLETED COLLEGE

HEALTH

70% OF PARTICIPANTS HAVE A CHRONIC DISEASE

12% ARE IN POOR OR VERY BAD HEALTH

50% HAVE UNPAID MEDICAL BILLS



30% OF PARTICIPANTS HAVE DEPRESSION/MENTAL HEALTH ISSUE

24% OF PARTICIPANTS HAVE DIABETES

22% OF PARTICIPANTS HAVE HIGH BLOOD PRESSURE

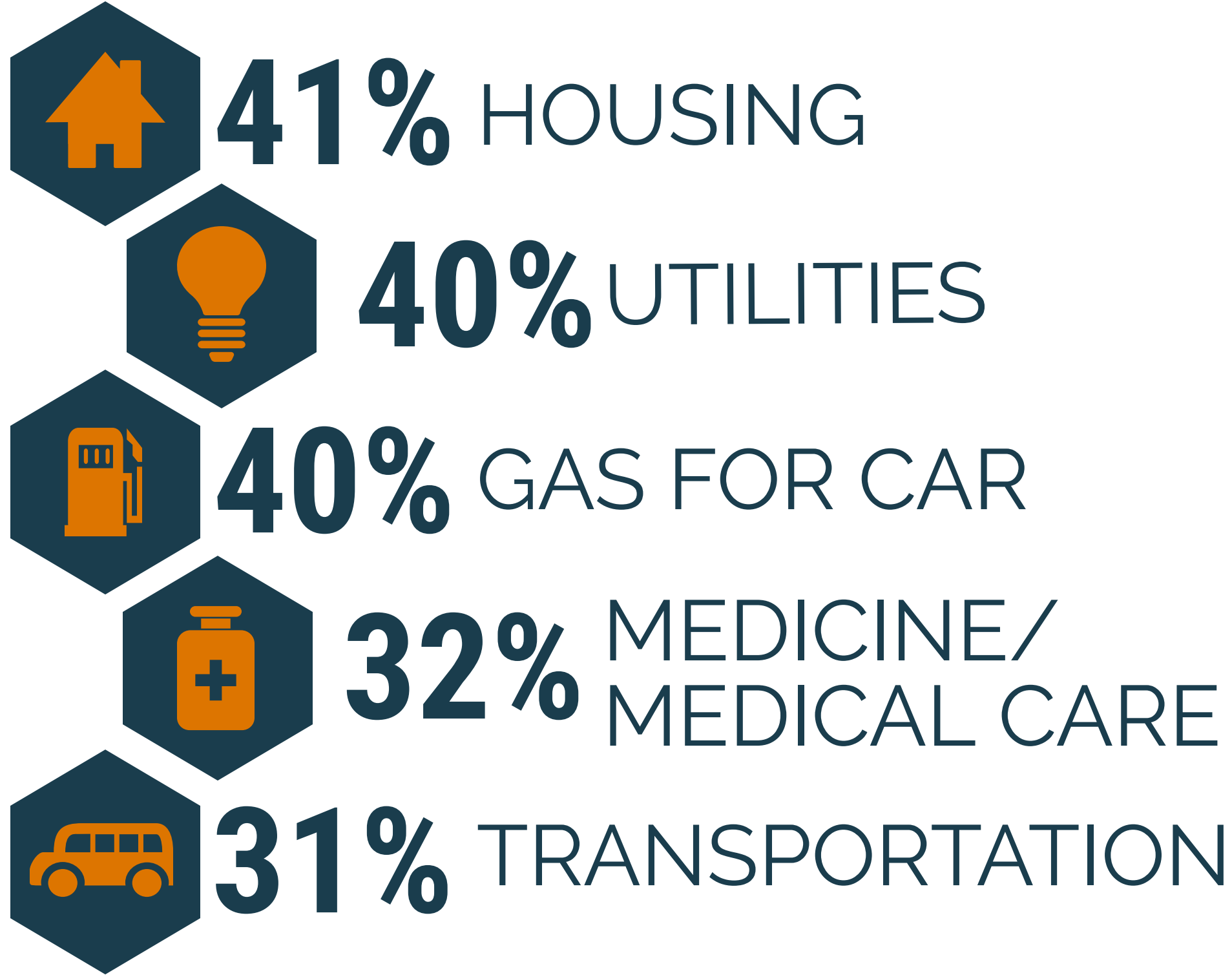
12% OF PARTICIPANTS HAVE ASTHMA

12% OF PARTICIPANTS ARE OBESE

12% OF PARTICIPANTS SUFFER WITH ADDICTION

TOUGH CHOICES

HOUSEHOLDS REPORT CHOOSING BETWEEN FOOD AND:



WHAT WOULD HELP?

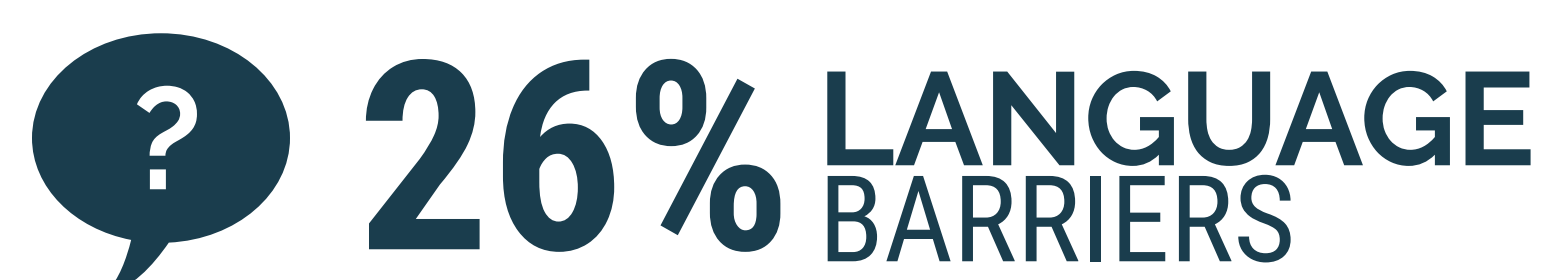
CLIENTS SHARED WHAT ELSE WOULD HELP THEM GET THE FOOD THEY NEED FOR THEMSELVES/FAMILY:



FOOD ASSISTANCE



ROOT CAUSES



www.greatplainsfoodbank.org

Ending Hunger 2.0 is Great Plains Food Bank's bold next step in hunger relief, working on root causes to hunger through research, advocacy and community based solutions.

eh20@greatplainsfoodbank.org



www.endinghunger20.org